

Registration No :

--	--	--	--	--	--	--	--	--	--

Total Number of Pages : 03

B.Tech
PECI5405

7th Semester Back Examination 2019-20
ESTIMATION, COSTING AND PROFESSIONAL PRACTICE
BRANCH : CIVIL
Time : 3 Hours
Max Marks : 70
Q.CODE : HB483

Answer Question No.1 which is compulsory and any FIVE from the rest.
The figures in the right hand margin indicate marks.

- Q1 Answer the following questions : (2 x 10)**
- a) List out the required data for preparation of an estimate?
 - b) How DPC work and lime terracing in roof work are measured?
 - c) Write the uses of DUMMY activity.
 - d) Define carpet area of a building.
 - e) Differentiate rate abstract and detailed estimate.
 - f) Write the purposes of rate analysis.
 - g) How are general specifications different from detailed specifications?
 - h) Define 'EST', EFT', LST and LFT'.
 - i) Distinguish between float and slack
 - j) What are the errors in a network?
- Q2 Estimate the quantities of following items of work for a building as shown in Fig 1**
- a) Cement concrete in foundations (5)
 - b) First class brick work in foundation (5)
- Q3 Estimate the following quantities of a culvert as shown in Fig 2.**
- a) Earthwork Excavation (5)
 - b) 1:4:8 Cement concrete in foundation (5)
- Q4**
- a) Find out the rate analysis of I-class brickwork in super structure with 20 x 10 x 10 cm brick with 1:6 Cement Sand Mortar. (5)
 - b) Give the rate analysis per sq m of 2.5cm thick Damp Proof Course with cement mortar 1:2 ratio (5)
- Q5**
- a) Write the detailed specification for earthwork in excavation in foundation. (5)
 - b) Write the detailed specification for Reinforced cement concrete. (5)
- Q6 For the given project, find critical path and project duration. Also calculate all activity times and floats in tabular form. (10)**

Activity	0-1	1-3	1-2	2-3	1-4	3-4	4-5
Duration (days)	3	16	6	8	10	5	3

Q7 Draw a PERT network for the followings and find expected mean time, variance and standard deviation of the project. **(10)**

Activity	Three time Estimates (days)
0-1	2-3-10
0-2	4-5-6
1-2	0-0-0
1-3	6-7-8
1-4	1-5-9
2-5	3-5-19
3-4	0-0-0
4-5	1-3-5

Q8 Write short Notes on any TWO : **(5 x 2)**

- a) Long wall Short wall method of Estimation
- b) General specification of a First class building
- c) Three time estimation in PERT

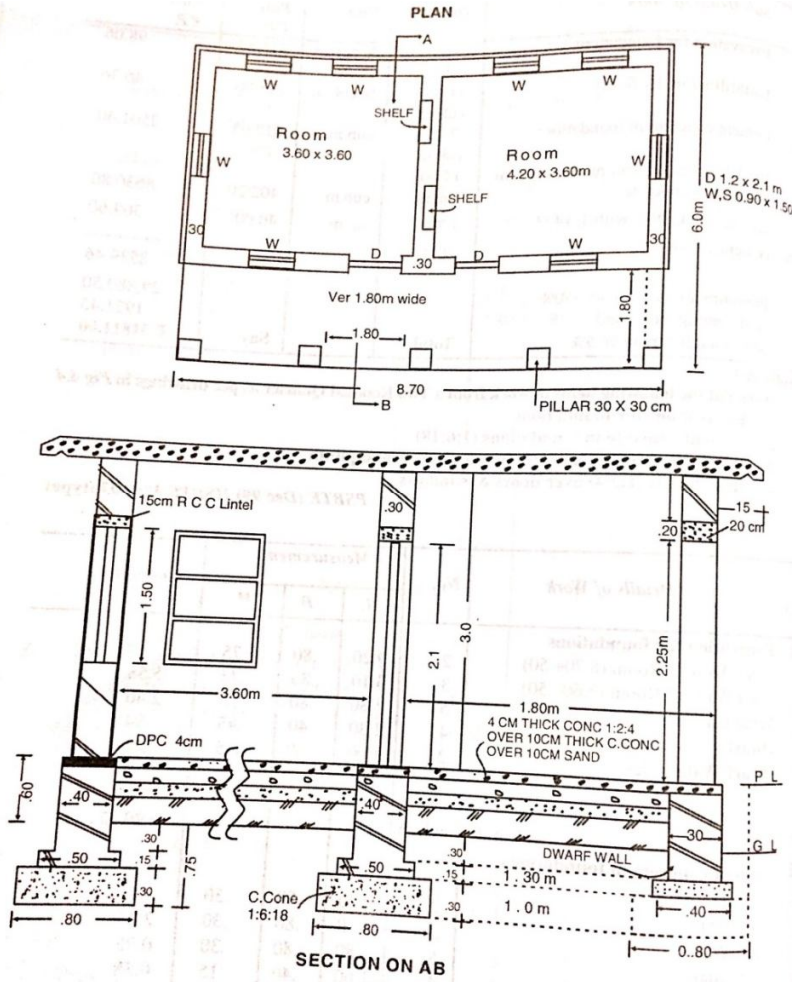


Fig-1

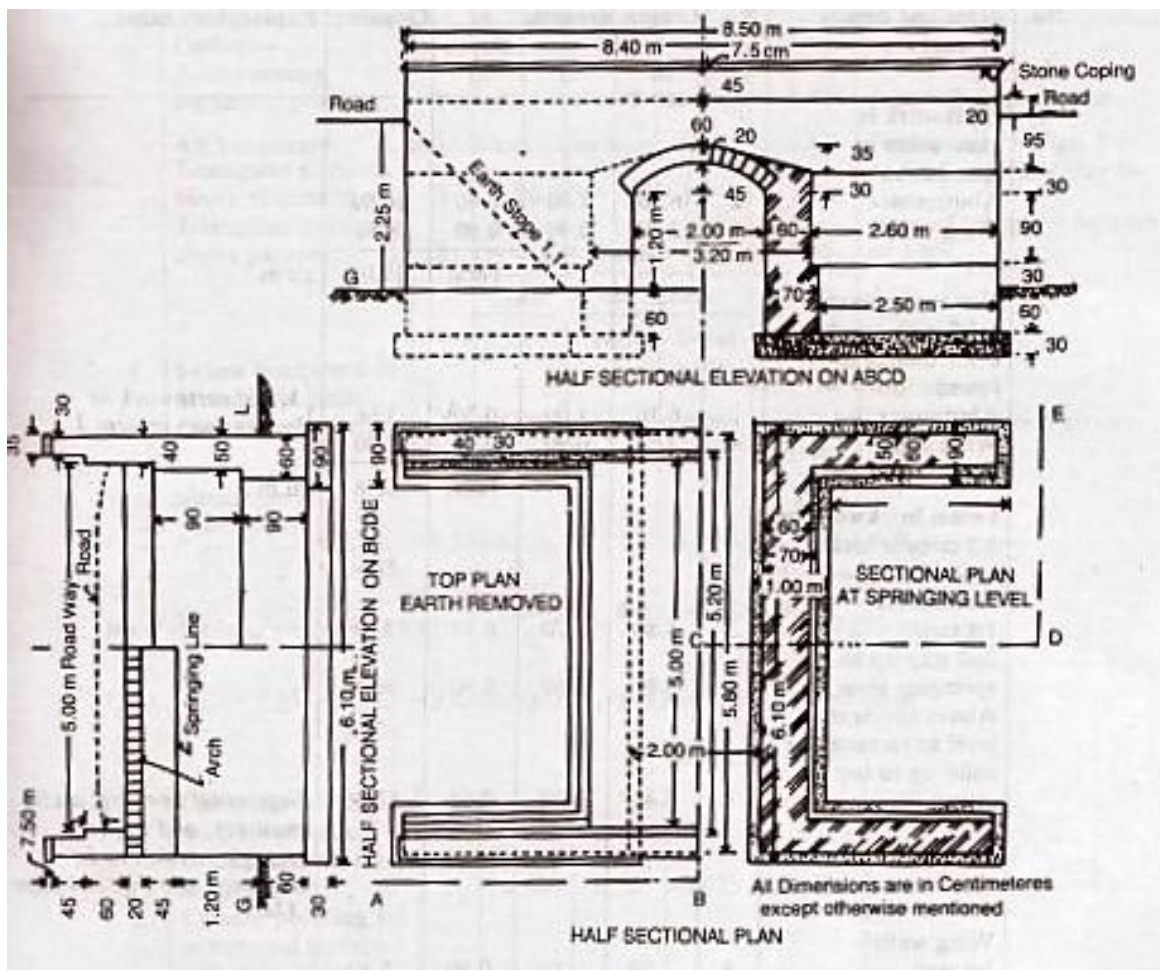


Fig-2